

Figures

Discussion note about the Chattian (Upper Oligocene) lithostratigraphic units Voort sand /Veldhoven clay /Someren sand.

Michiel Duser and Noël Vandenberghe

Fig 01 Distribution Upper Oligocene

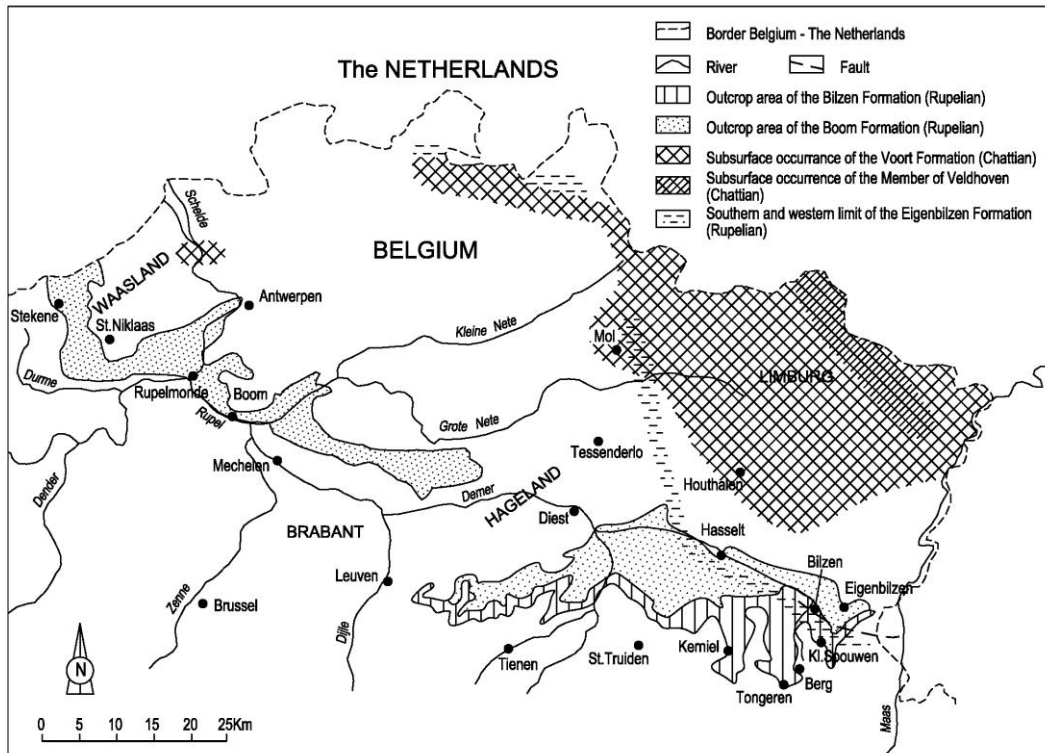
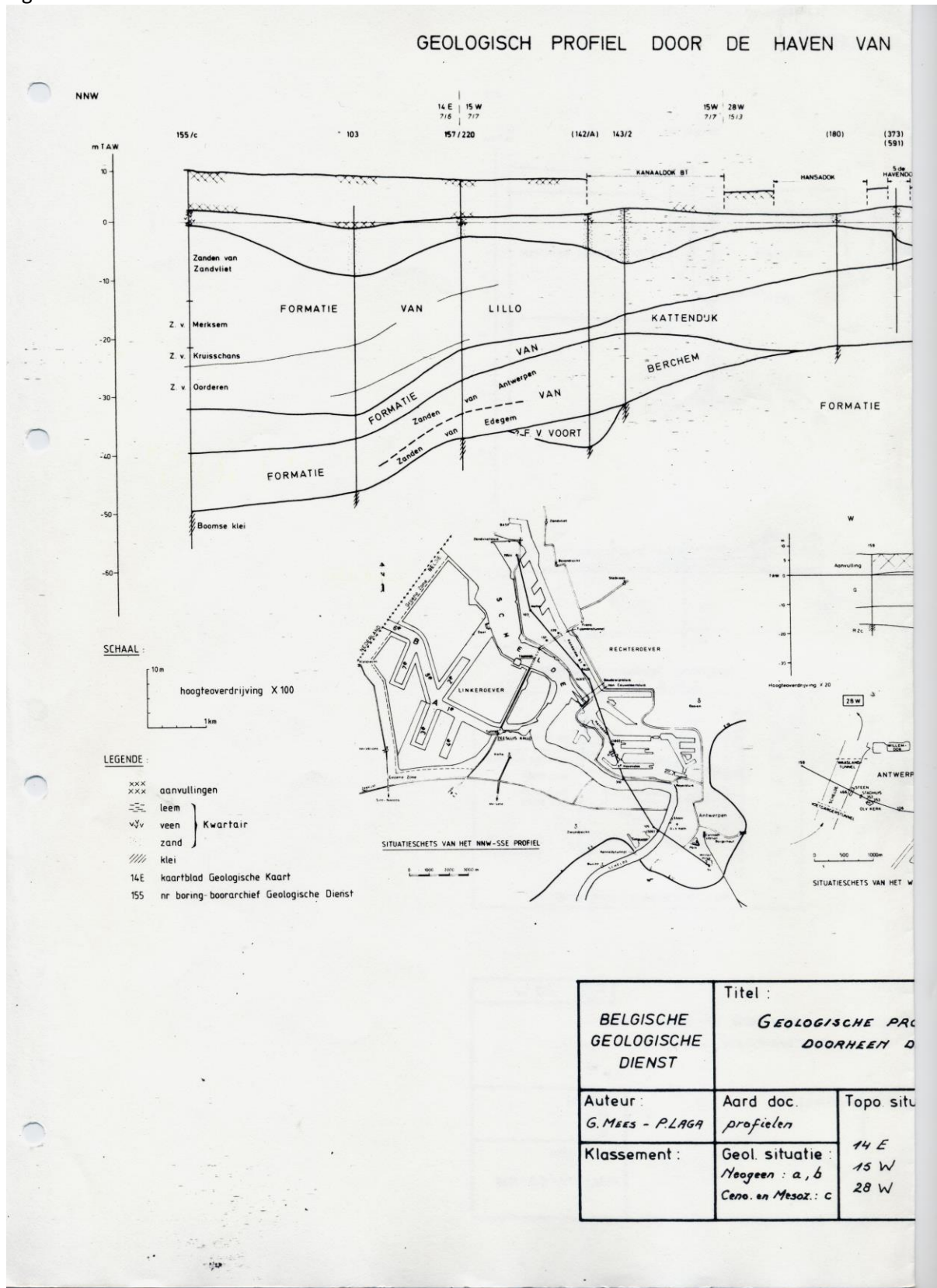


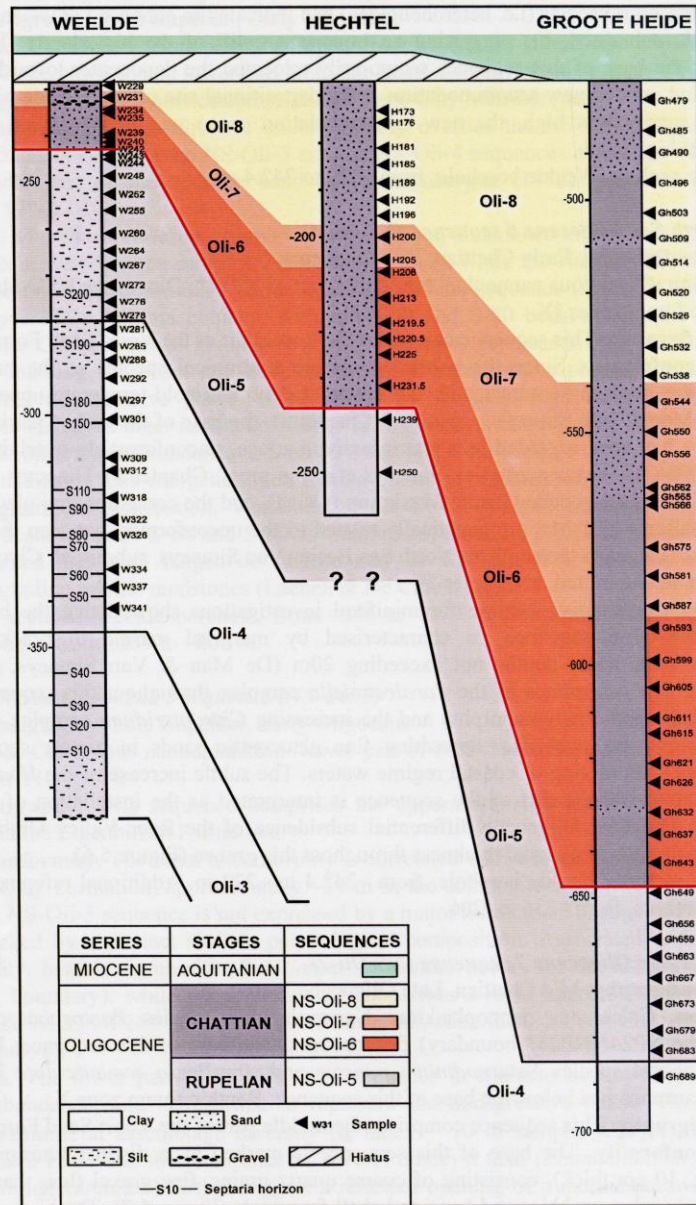
Figure 2.

Fig 02 Ekeren borehole

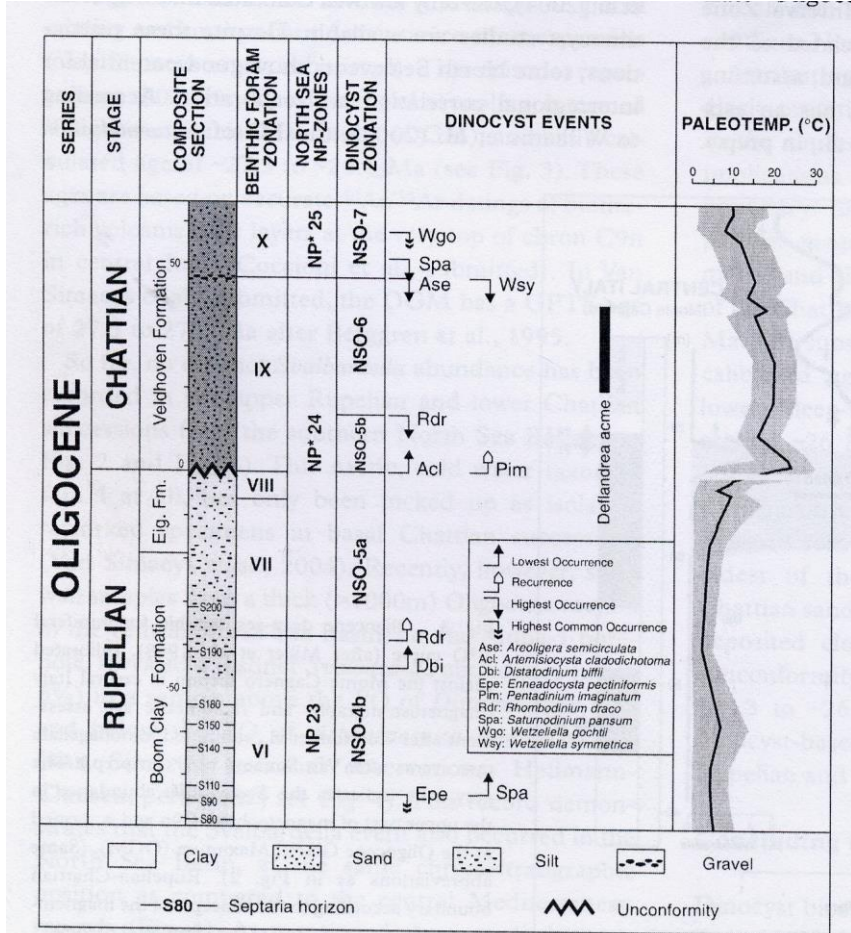


<b>BELGISCHE GEOLOGISCHE DIENST</b>		Titel :	
		<i>GEOLOGISCHE PRO DOORHEEN D</i>	
Auteur :	Aard doc.	Topo situ	
<i>G. Mees - PLAGA</i>	<i>profielen</i>		
Klassement :	Geol. situatie :	14 E	
	<i>Neogeen : a, b</i>	15 W	
	<i>Ceno. en Mesoz. : c</i>	28 W	

OLIGOCENE SEQUENCE BIOSTRATIGRAPHY



▲ Figure 5.6. Late Oligocene sequences across the Roer Valley Graben, as recognised by dinocyst biostratigraphy (see Van Simaey et al., in press; Chapter 1; submitted, b; Chapter 2), showing differential subsidence of the graben during the Chattian.



Netherlands Journal of Geosciences / Geologie en Mijnbouw 83(3) 2004

Fig 04 SVS2004b-4

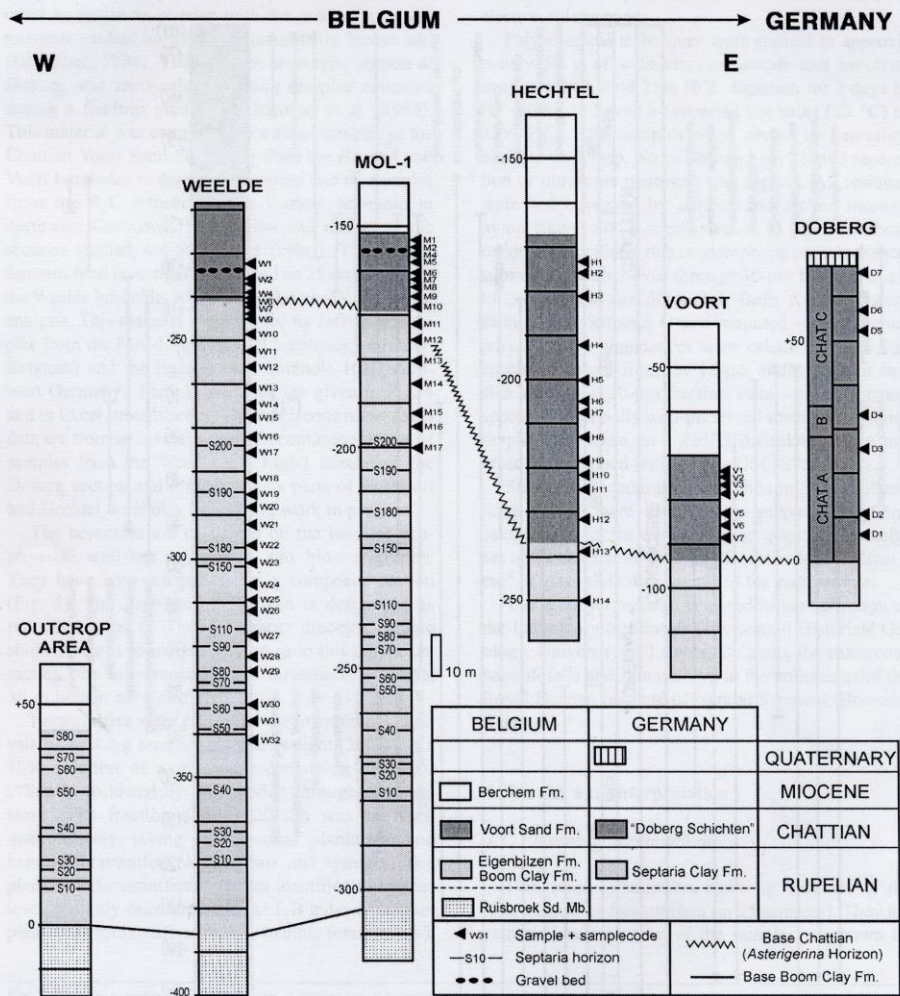


Fig. 4. Correlation between the five studied sections and the outcrop area of the Boom Clay Formation in its type locality. The Doberg section is subdivided into Chattian A and B (Eochattian) and Chattian C (Neochattian), as indicated in Anderson et al. (1971). Sample positions are given in Excel spreadsheet 1.

Fig 06 De Man et al-6

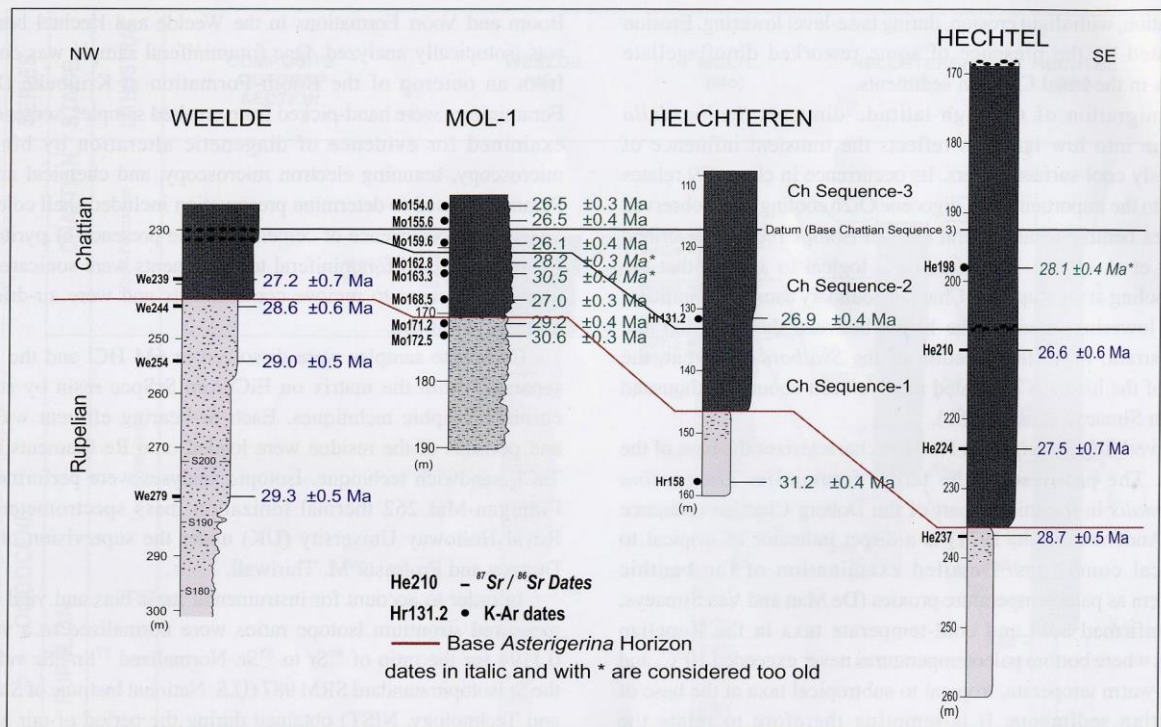


Figure 4. Schematic correlation between the bore holes at the Rupelian-Chattian boundary level, based on the correlations shown in Fig.3, displaying the obtained Sr-isotope and K-Ar dates (see also Tables 1 and 2).

Fig 07 Wong et al 7

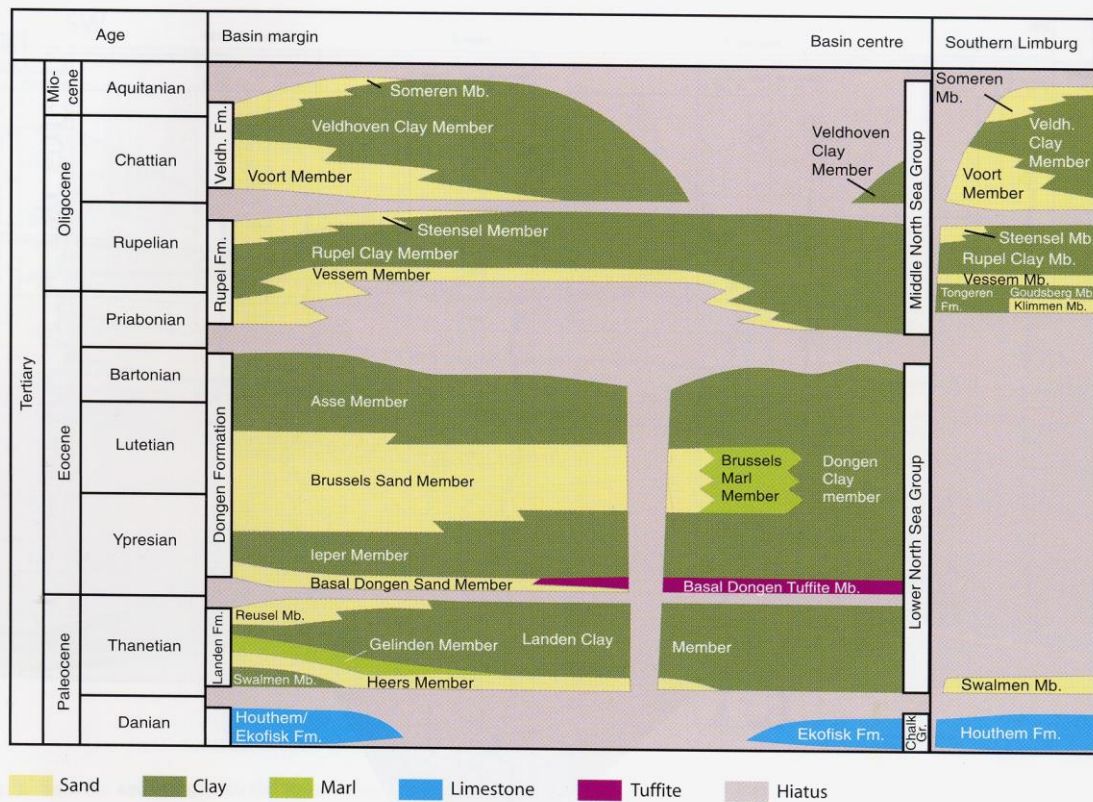


Fig 08 Sh++ | fer et al 2014-8

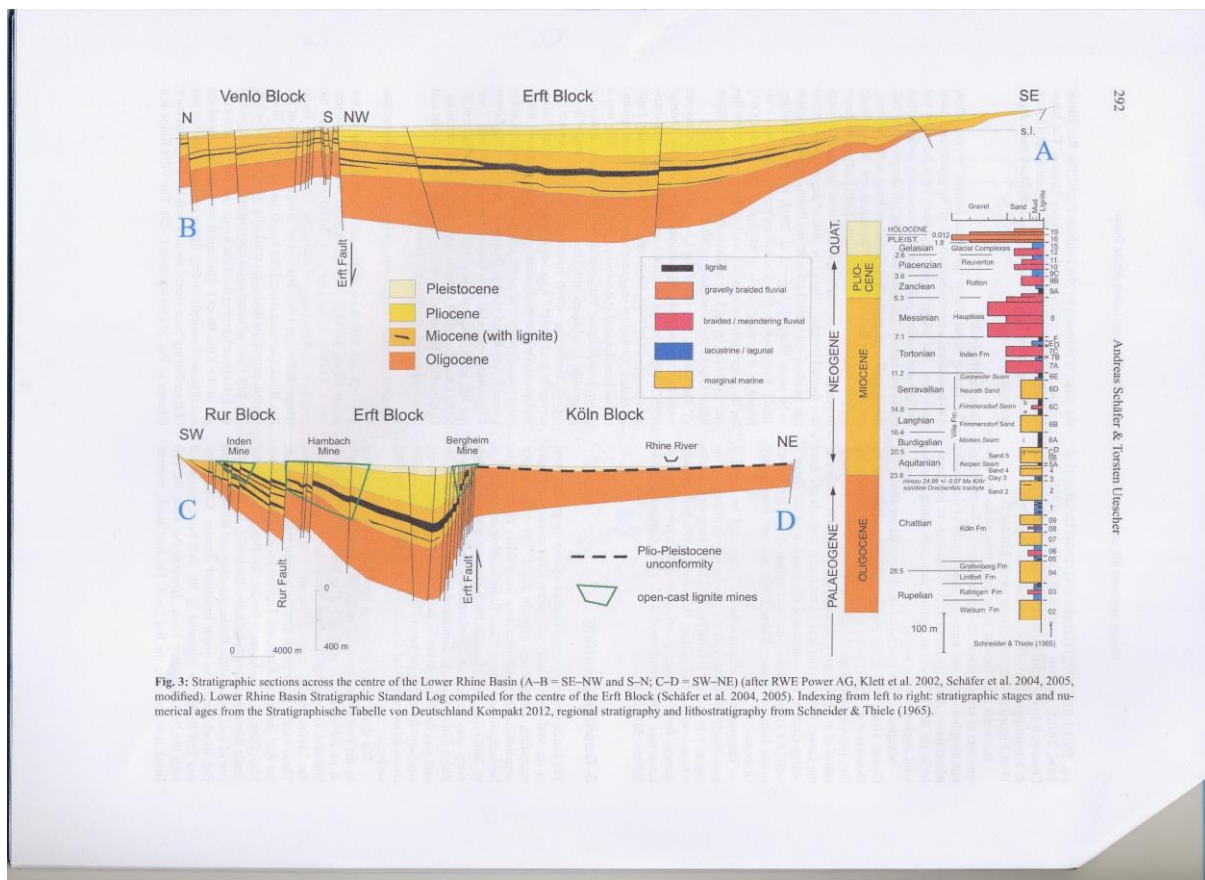


Fig 09 Hager et al. S&T

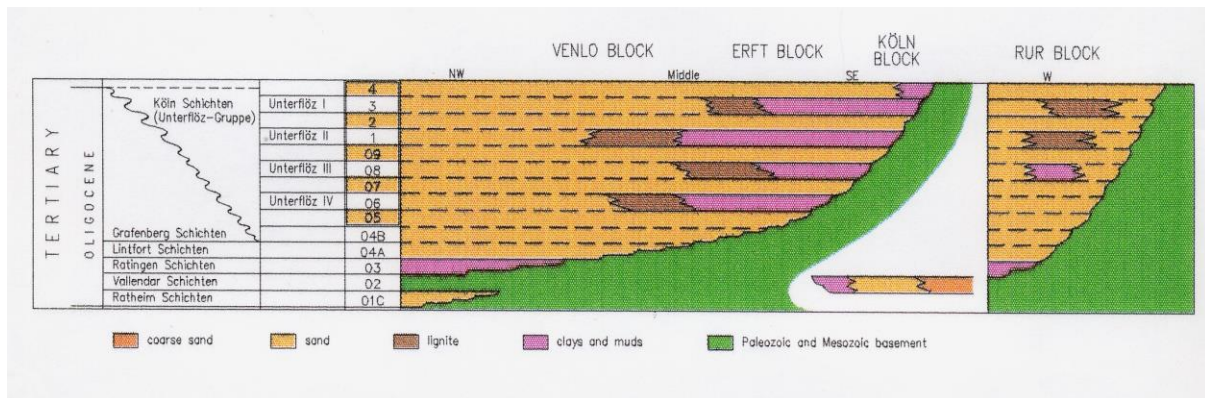


Fig 10 Hager et al fig 5-11

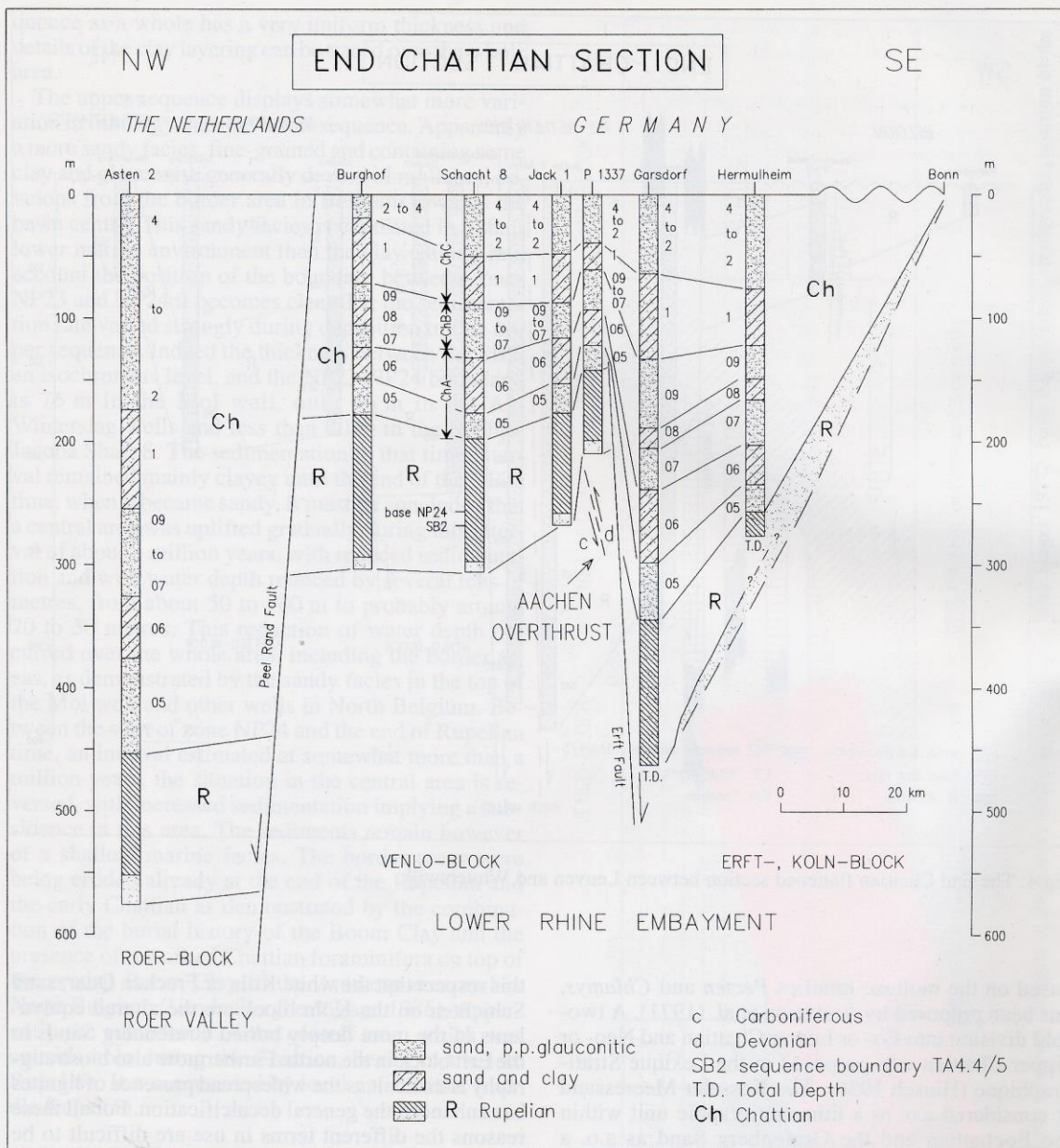


Fig.5. The End Chattian flattened section between Asten and Bonn. In Schacht 8 the Chattian subdivisions A,B and C could be determined.



Fig 11 VSV et al 2005 fig 412

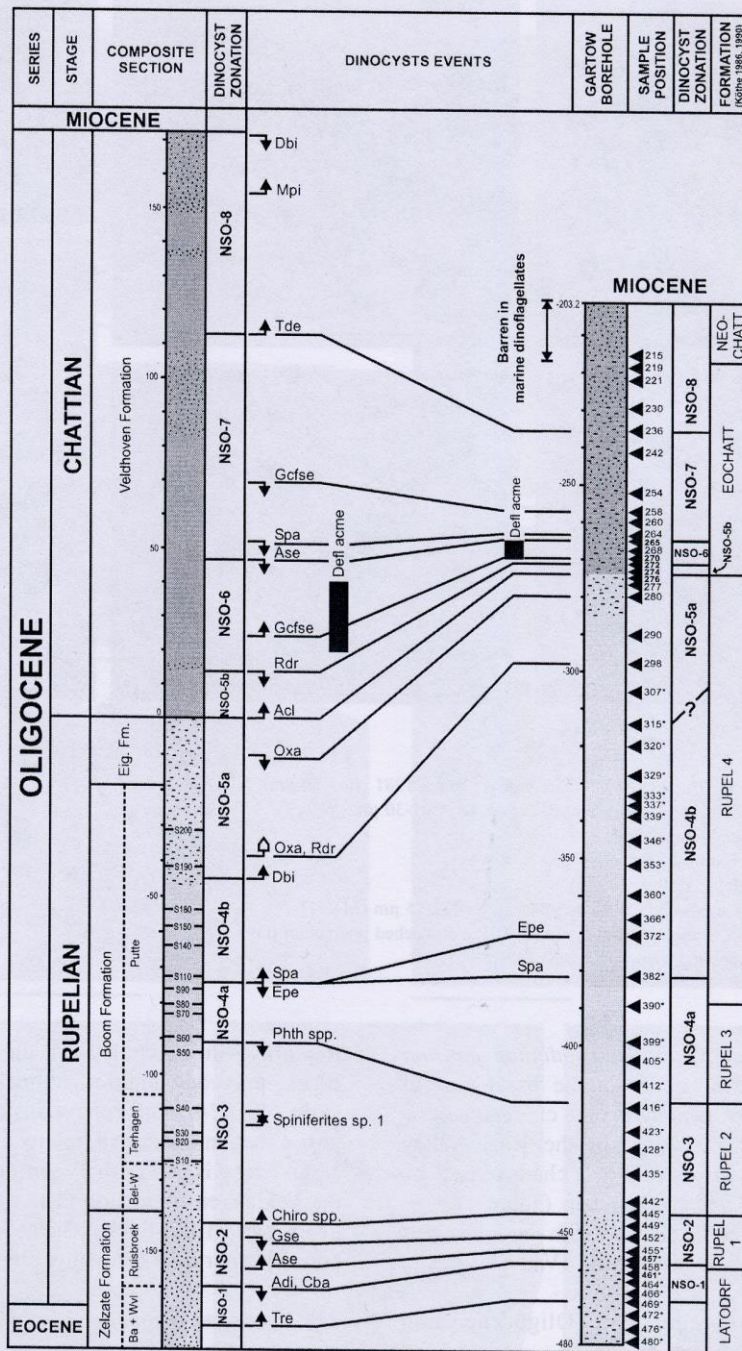


Fig. 4. Dinoflagellate cyst correlation between the composite diagram of the Oligocene southern North Sea sections and the Gartow borehole in northern Germany. Samples from the Gartow borehole indicated with an asterisk were analysed by Köthe (1990); samples without asterisk were analysed in this study.

Fig 12 VDB et al 2004 13

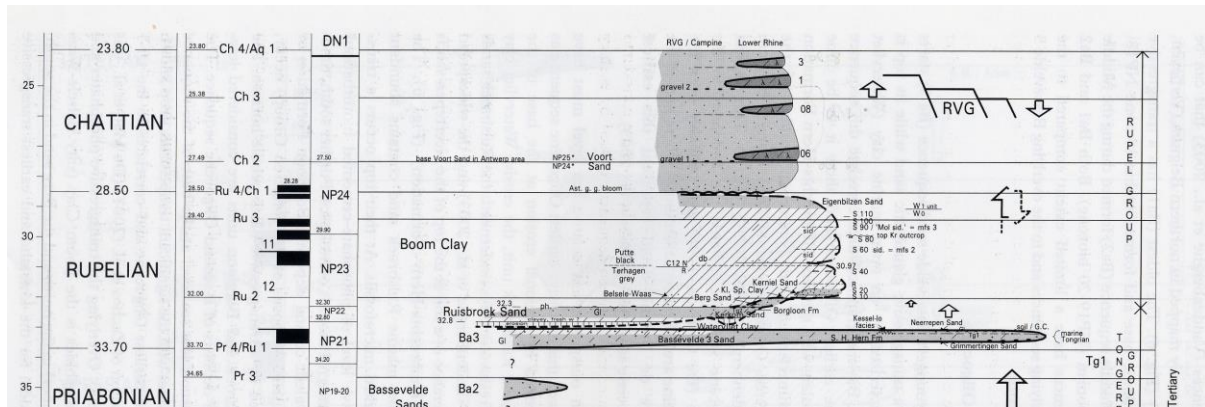


Fig 13 Hager et al. fig 4

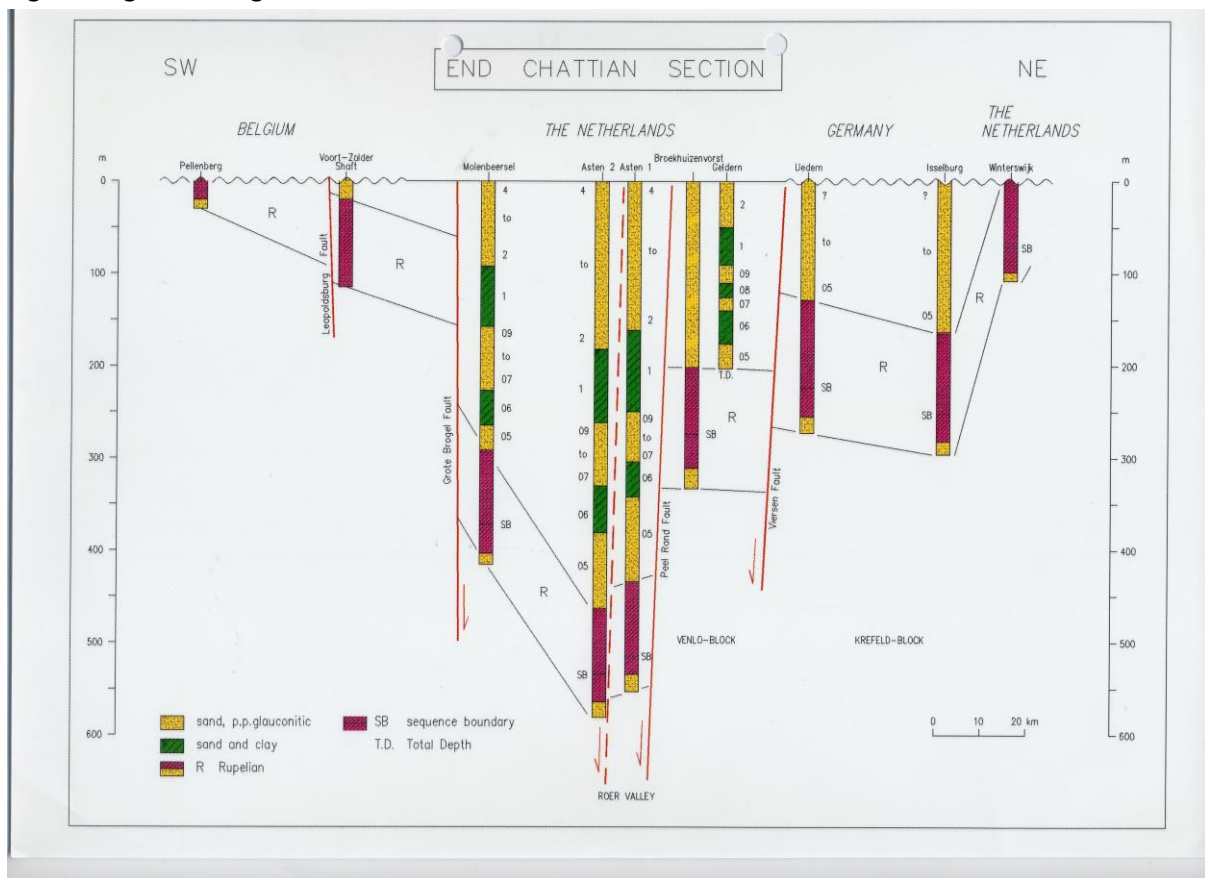
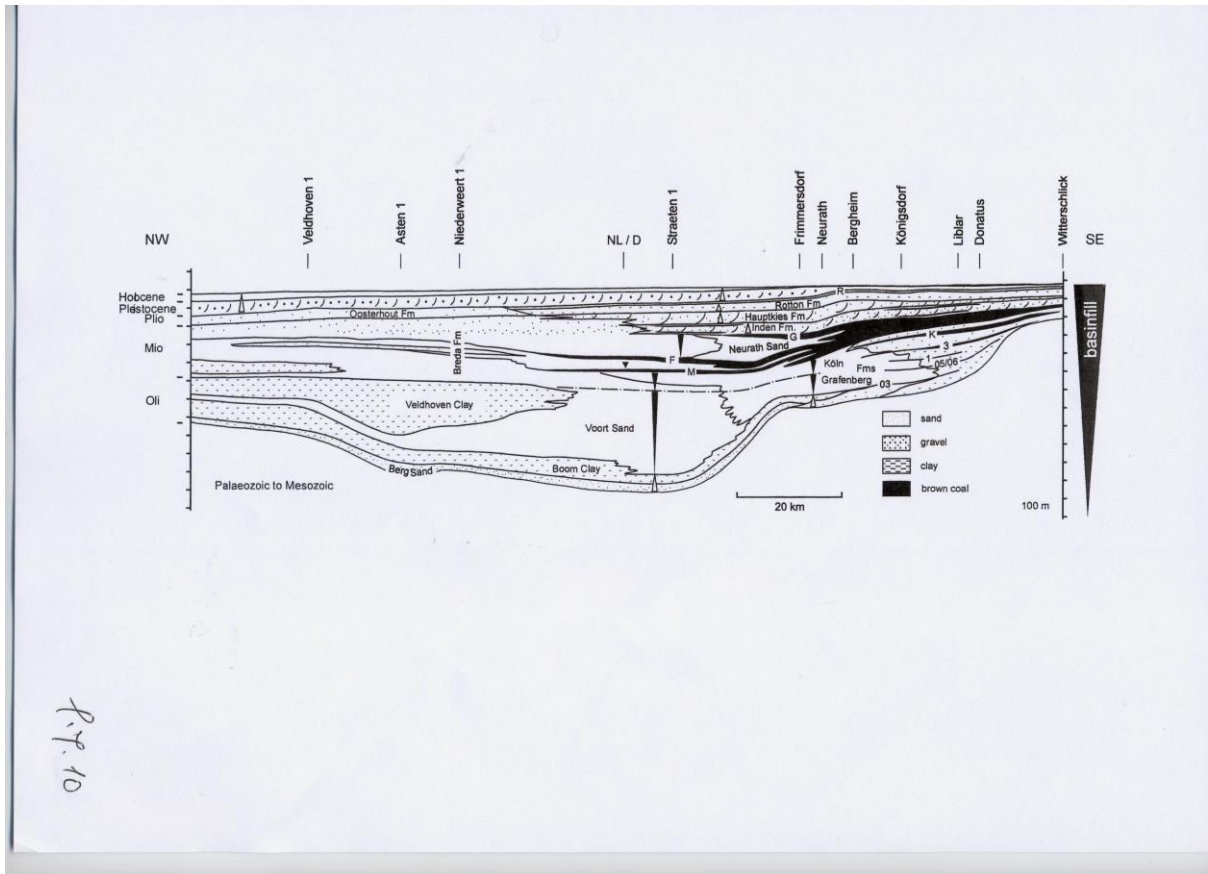


Fig 14 Sch++ |fer et al 2-16



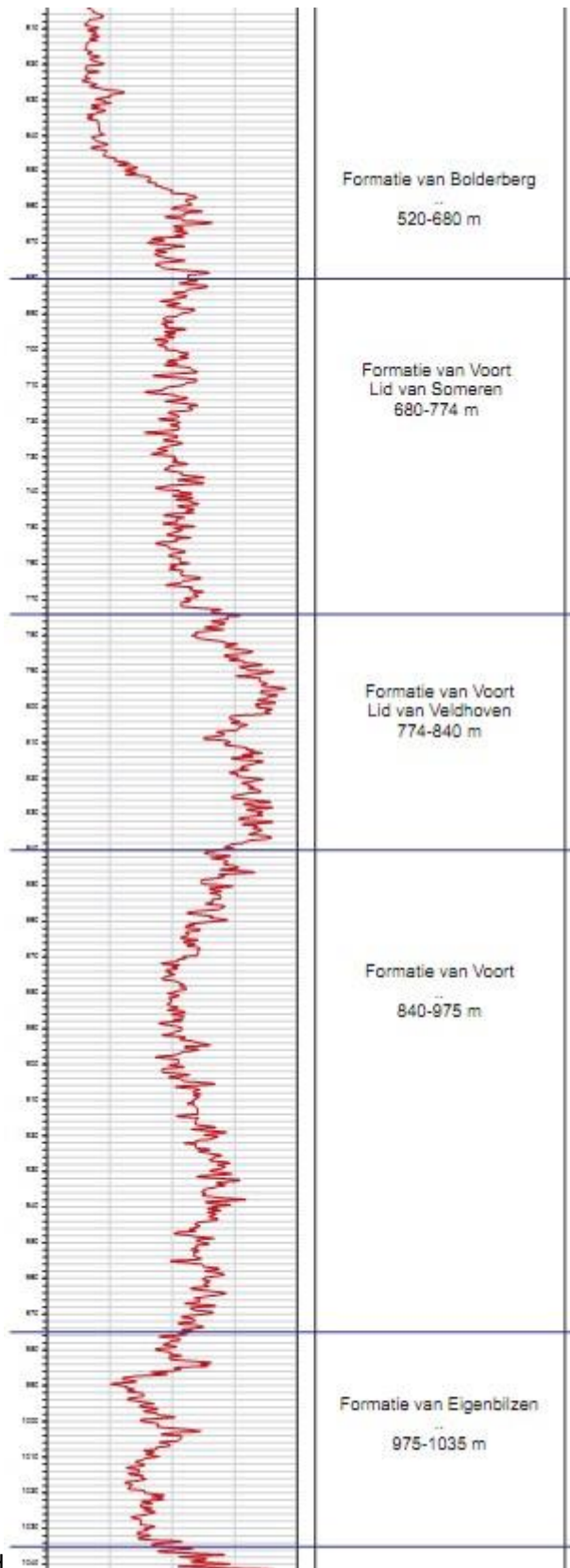


Fig 15 Molenbeersel interpreted

Fig 16 Molenbeersel Wong

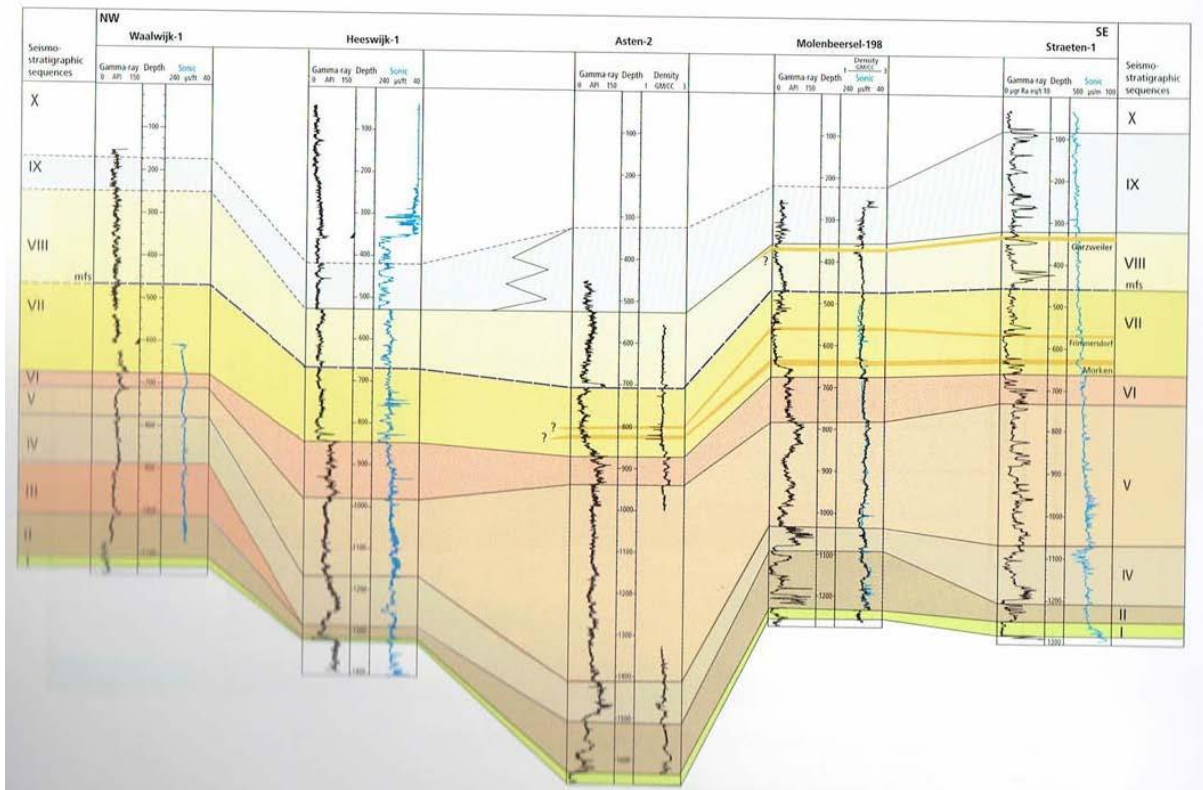


Fig 17 H302 profiel

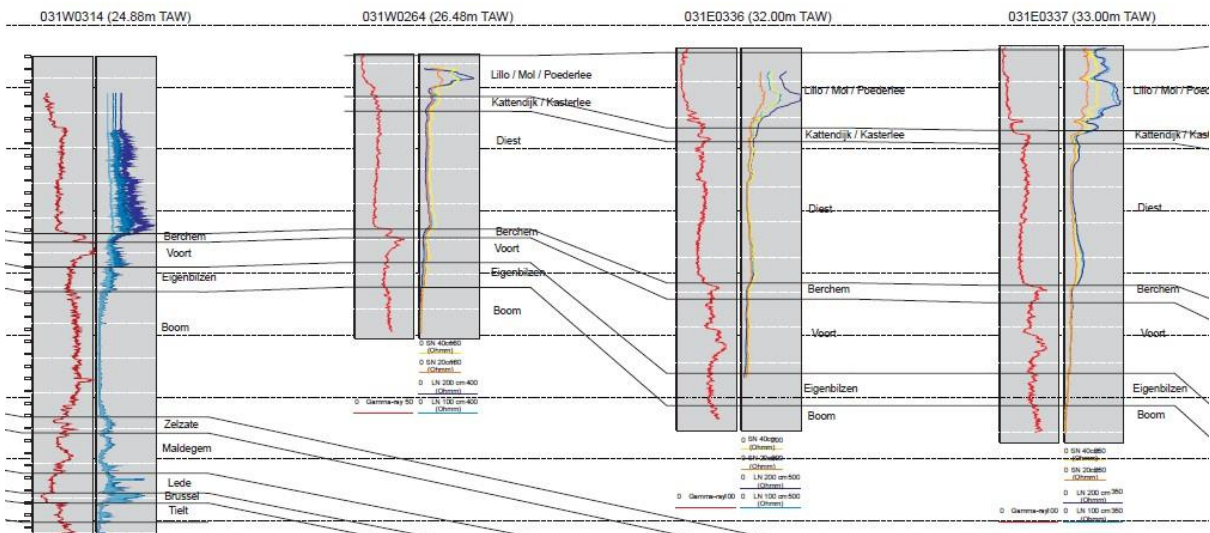


Fig 18 47W0260 KS13 Voort

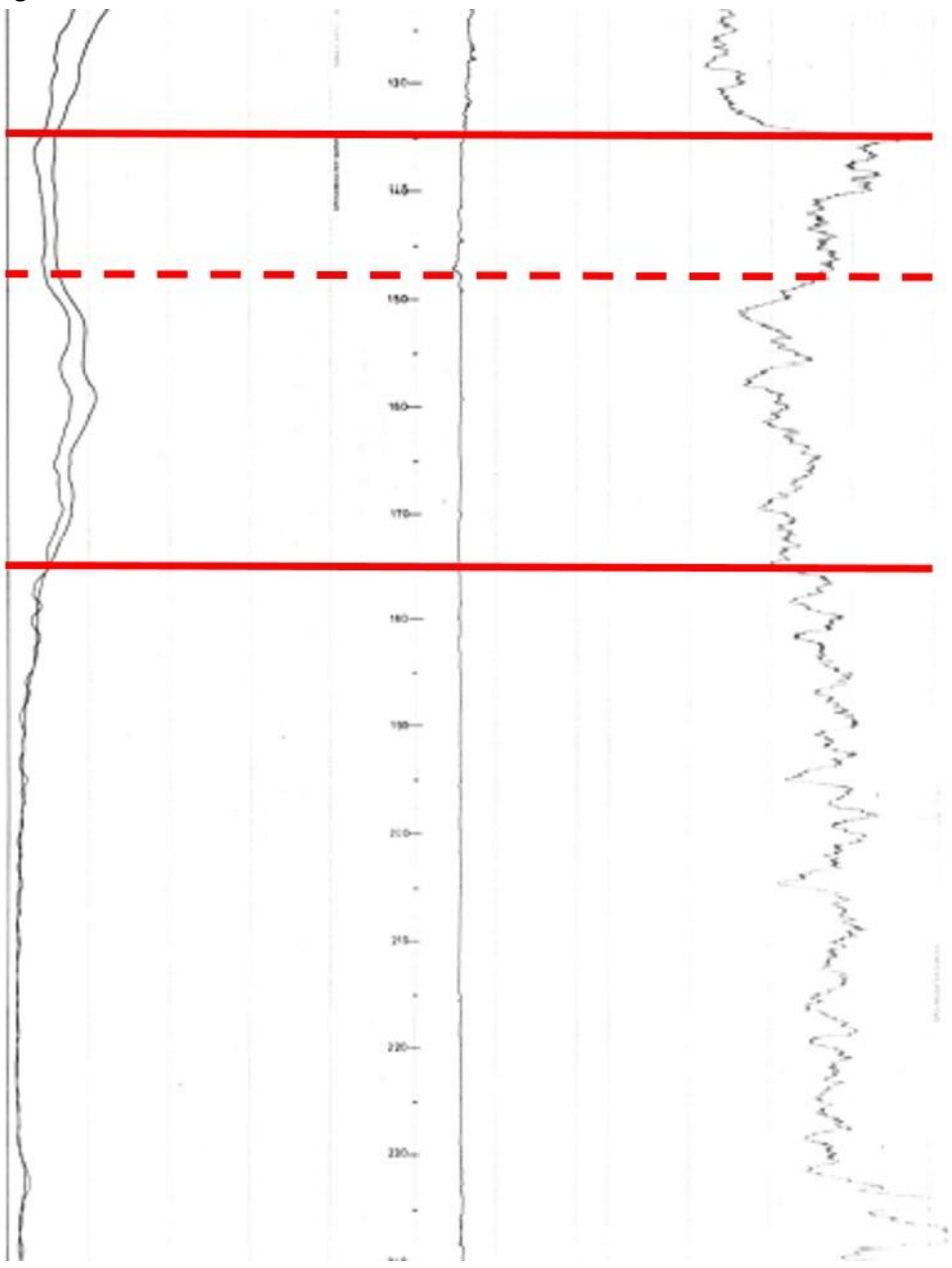
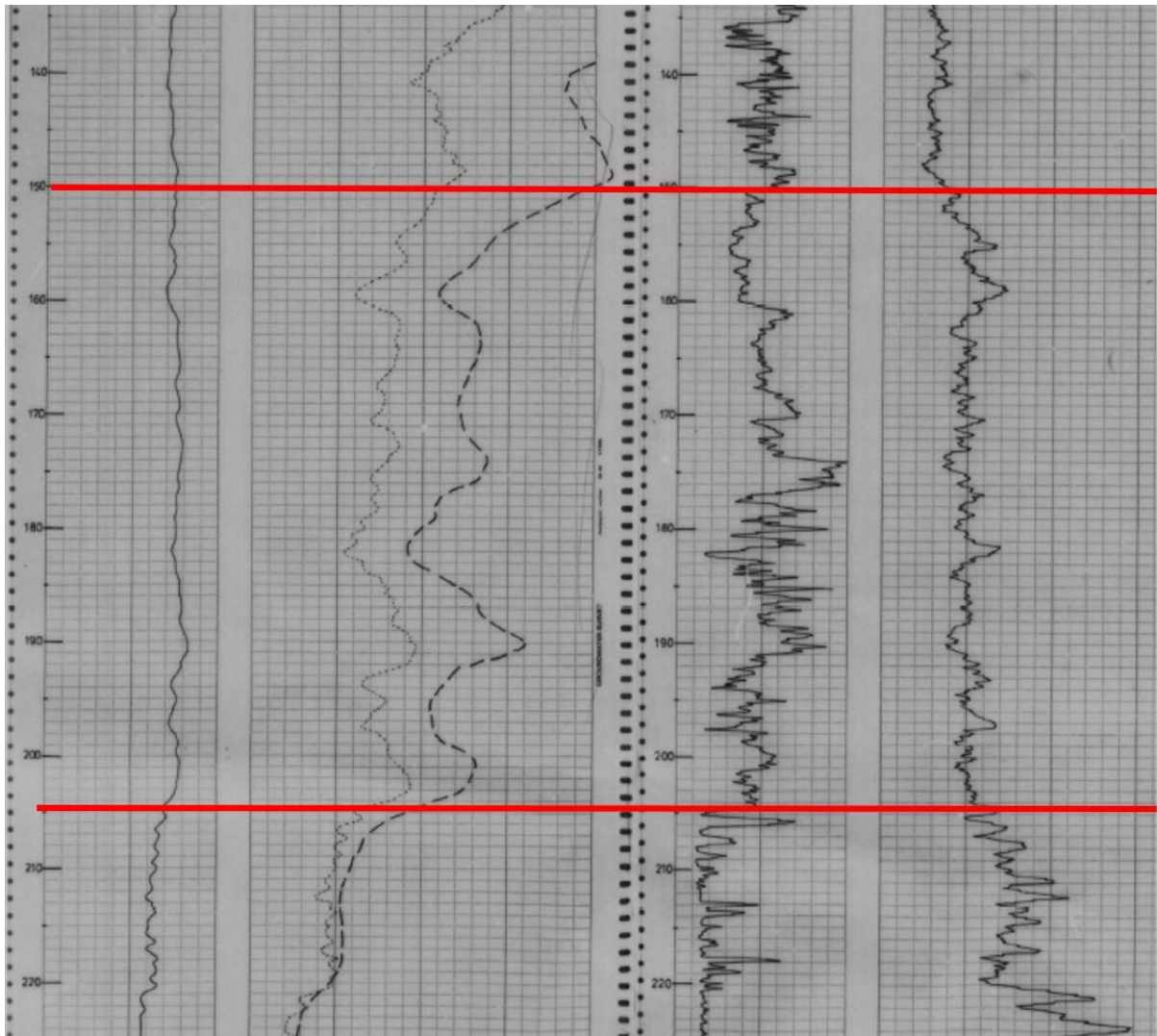


Fig 19 63E0218 KB161 Voort



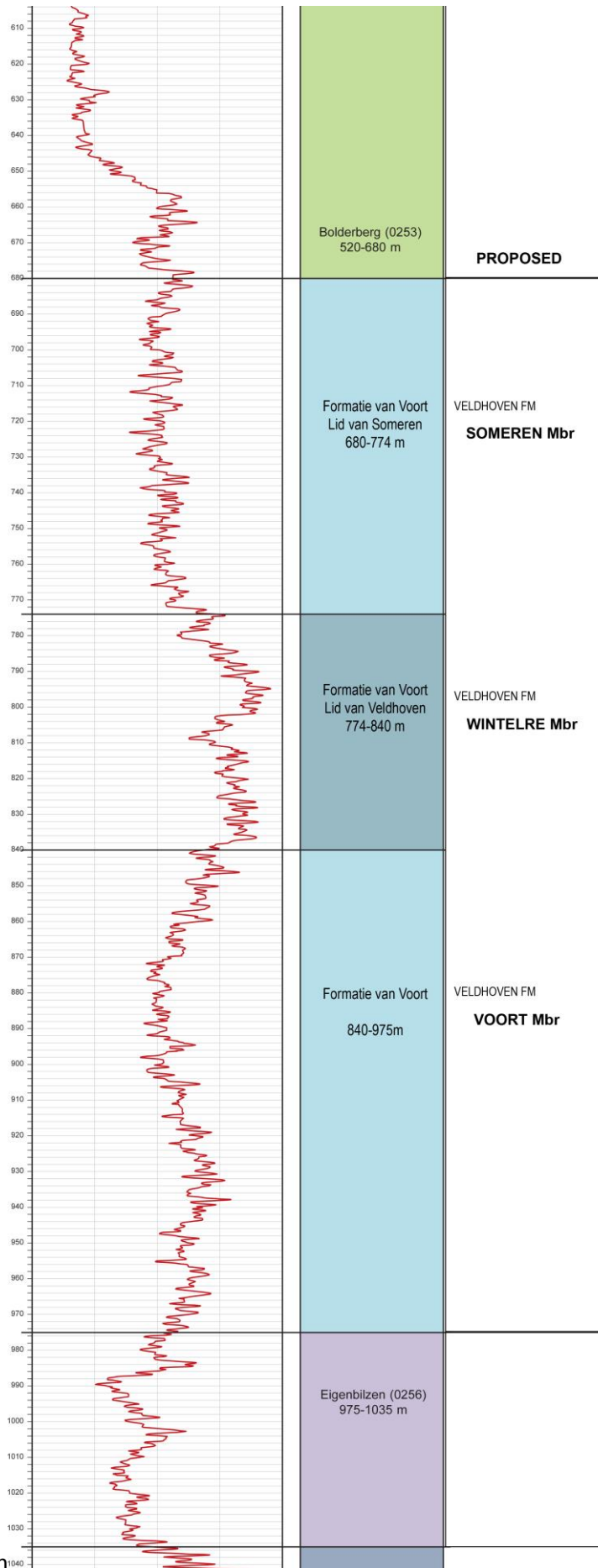


Fig boven oligoceen